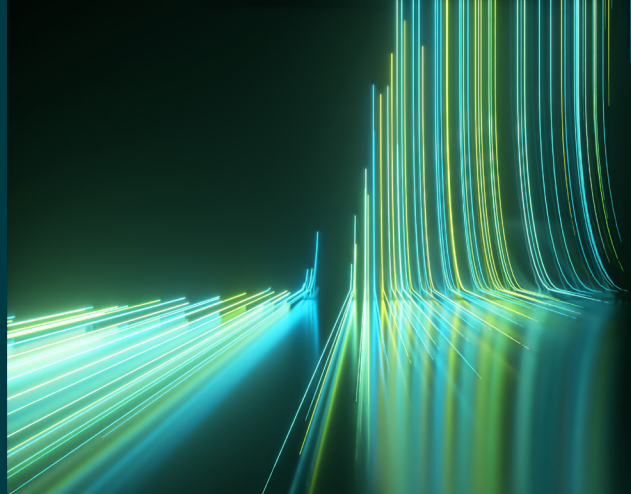


WILEY

Spectral Databases

From the leader in spectral data



Raman - Pigments & Dyes - Wiley

Spectra – 477

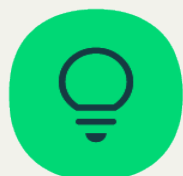
This database is only available as part of the KnowItAll Raman Spectral Library subscription.



Description

This database contains a large, curated collection of high-quality Raman spectra for a broad range of organic and inorganic pigments and dyes commonly used in commercial, artistic, industrial, and forensic applications. The collection includes Raman spectra of widely used pigments and dyes, providing reliable reference data for confident spectral identification.

Raman spectroscopy is well suited for pigment and dye analysis because it is a non-destructive, highly specific technique effective on micro-scale samples and complex matrices. This database supports reliable identification and verification of pigments and dyes in paints, inks, plastics, textiles, coatings, and cultural heritage materials, enabling faster, more confident matching across research, quality control, conservation, and forensic workflows.



Applications

- Paints, coatings, and inks
- Environmental and forensic analysis
- Pharmaceutical and industrial dyes
- Art conservation and authentication
- Degradation and alteration studies
- Forgery detection and provenance
- Archaeometry and cultural heritage
- Textile and dye analysis



Additional information

When it comes to spectral analysis, the more data you have the better. Wiley spectral databases provide much more information than simply the spectrum. Database records include the following valuable details when available:

- Chemical structure
- Chemical name
- Exact mass
- Formula
- InChI/InChIKey
- Molecular weight
- SMILES
- Instrument name
- Technique



Compound coverage

- Azo pigments
- Quinacridone pigments
- Phthalocyanine pigments
- Dioxazine pigments
- Isoindoline pigments
- Inorganic white and yellow pigments
- Historical pigments



Compatibility

- Subscription includes KnowItAll ID Expert software for one-click basic spectral searches
- Optional: KnowItAll Analytical Edition (recommended for advanced analysis)
- Import spectra from most Raman instruments for direct comparison to reference spectra. For instrument compatibility, visit sciencesolutions.wiley.com/compatibility.



Trusted data from a trusted source

Wiley is the authoritative source for spectral data. Our renowned databases are processed according to rigorous protocols to ensure they are of the highest quality. Qualification procedures start at data acquisition and continue throughout the database development process. Any data acquired from trusted partners is thoroughly vetted before inclusion in our collections.