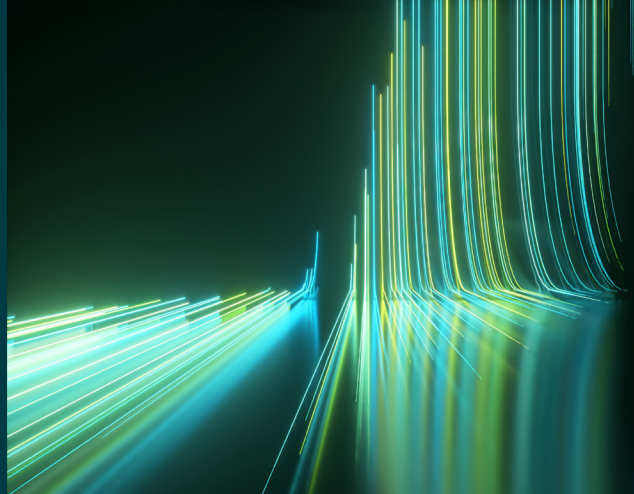


# WILEY

## Spectral Databases

From the leader in spectral data



### Raman - Minerals - Wiley

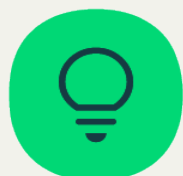
Spectra – 821

This database is only available as part of the KnowItAll Raman Spectral Library subscription.



#### Description

Minerals are naturally occurring, inorganic solids with unique chemical compositions and crystalline structures. This database contains Raman spectra of minerals, which are crucial for their identification, classification, and verification. Raman spectroscopy, a powerful and non-destructive technique, provides distinctive fingerprints for precise mineral characterization. Notably, minerals are found both on Earth and in meteorites, making this database invaluable for a wide range of scientific studies.



#### Applications

- Geology and mineralogy
- Geochemistry
- Materials science
- Planetary science
- Environmental science



#### Additional information

When it comes to spectral analysis, the more data you have the better. Wiley spectral databases provide much more information than simply the spectrum. Database records include the following valuable details when available:

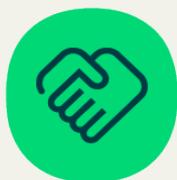
- Chemical structure
- Chemical name
- Exact mass
- Formula
- InChI/InChIKey
- Molecular weight
- SMILES
- Instrument name
- Technique



## Compound coverage

Minerals include:

- Carbonates
- Sulfates
- Oxides
- Carbides
- Sulfides
- Olivines
- Basalts
- Inosilicates
- Feldspars



## Trusted data from a trusted source

Wiley is the authoritative source for spectral data. Our renowned databases are processed according to rigorous protocols to ensure they are of the highest quality. Qualification procedures start at data acquisition and continue throughout the database development process. Any data acquired from trusted partners is thoroughly vetted before inclusion in our collections.