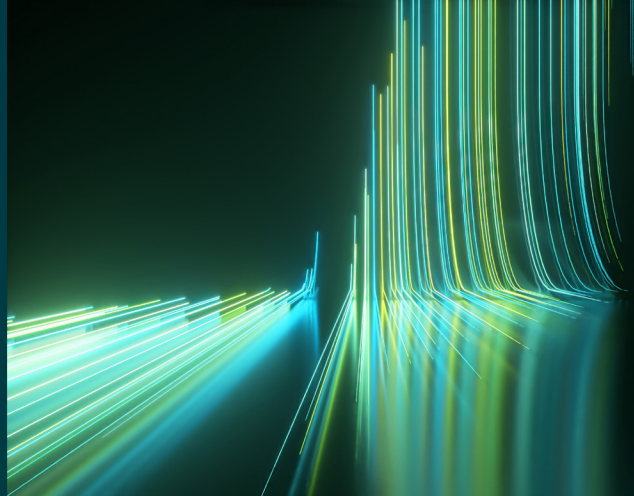


WILEY

Spectral Databases

From the leader in spectral data



Raman - Microbiology - Wiley

Spectra – 71

This database is only available as part of the KnowItAll Raman Spectral Library subscription.



Description

Raman spectroscopy is a rapid, non-destructive method for characterizing microbiological samples, enabling the characterization of microorganisms and microbiological materials. This database contains Raman spectra of methanogens and phytopathogenic fungi, supporting microbiology research, clinical and environmental studies, and applied analysis by enabling characterization, classification, and verification. The database is designed to assist users in studying the biochemical profiles of microorganisms, monitoring variability, and supporting identification workflows where traditional methods may be time-consuming or destructive.



Applications

- Microbiology research and method development
- Classification and comparison of microbiological materials
- Environmental microbiology studies



Additional information

When it comes to spectral analysis, the more data you have the better. Wiley spectral databases provide much more information than simply the spectrum. Database records include the following valuable details when available:

- Species name
- Classification
- Sample preparation procedure
- Source of spectrum
- Instrument name



Compound coverage

- Methanogens
- Fungi



Compatibility

- Subscription includes KnowItAll ID Expert software for one-click basic spectral searches
- Optional: KnowItAll Analytical Edition (recommended for advanced analysis)
- Import spectra from most Raman instruments for direct comparison to reference spectra. For instrument compatibility, visit sciencesolutions.wiley.com/compatibility.



Trusted data from a trusted source

Wiley is the authoritative source for spectral data. Our renowned databases are processed according to rigorous protocols to ensure they are of the highest quality. Qualification procedures start at data acquisition and continue throughout the database development process. Any data acquired from trusted partners is thoroughly vetted before inclusion in our collections.