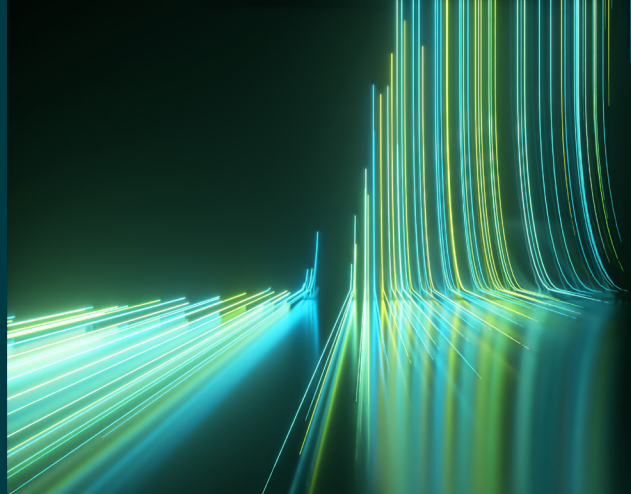


WILEY

Spectral Databases

From the leader in spectral data



Raman - Materials - Wiley

Spectra – 246

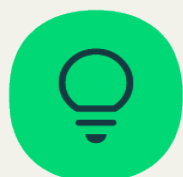
This database is only available as part of the KnowItAll Raman Spectral Library subscription.



Description

Materials and semiconductors form the foundation of modern technologies, from electronic devices and energy systems to advanced coatings and functional materials. This database contains high-quality Raman spectra for a broad range of inorganic materials and semiconductor compounds, supporting reliable material identification and verification.

This database brings together Raman spectra for a diverse set of materials, including graphene-based systems, metal oxides, semiconductors, nanomaterials, and carbon-derived structures.



Applications

- Materials science
- Semiconductor research
- Nanomaterials and 2D materials research
- Academic Research



Additional information

When it comes to spectral analysis, the more data you have the better. Wiley spectral databases provide much more information than simply the spectrum. Database records include the following valuable details when available:

- Chemical structure
- Chemical name
- Formula
- InChI/InChIKey
- Molecular weight
- SMILES
- Instrument name
- Technique



Compound coverage

- Semiconductor materials
- Metal oxides
- Carbon materials
- Nanomaterials
- Functionalized inorganic materials



Compatibility

- Subscription includes KnowItAll ID Expert software for one-click basic spectral searches
- Optional: KnowItAll Analytical Edition (recommended for advanced analysis)
- Import spectra from most Raman instruments for direct comparison to reference spectra. For instrument compatibility, visit [sciencesolutions.wiley.com/compatibility](https://www.sciencesolutions.wiley.com/compatibility).



Trusted data from a trusted source

Wiley is the authoritative source for spectral data. Our renowned databases are processed according to rigorous protocols to ensure they are of the highest quality. Qualification procedures start at data acquisition and continue throughout the database development process. Any data acquired from trusted partners is thoroughly vetted before inclusion in our collections.