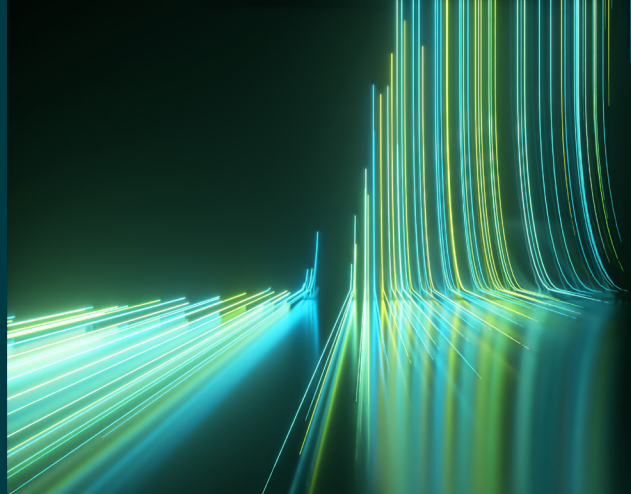


WILEY

Spectral Databases

From the leader in spectral data



Raman - Consumer Goods & Food-Related Compounds - Wiley

Spectra – 115

This database is only available as part of the KnowItAll Raman Spectral Library subscription.



Description

The safety and integrity of consumer goods are critical for the health of consumers. This Raman database includes illicit compounds that can sometimes be found in various products to ensure the safety of the product being ingested. This database also includes high-quality Raman reference spectra for pesticides and oils and oil mixtures, supporting reliable identification and verification across food safety, agriculture, consumer products, and chemical analysis workflows.

Raman spectroscopy provides a rapid, non-destructive approach for distinguishing active ingredients, detecting adulteration, and confirming material composition with minimal sample preparation. This curated collection enables confident spectral matching for quality control, regulatory compliance, and research applications.



Applications

- Pharmaceuticals
- Research and development
- Quality assurance
- Regulatory compliance
- Health and safety
- Sport and athletics
- Food
- Pesticides



Additional information

When it comes to spectral analysis, the more data you have the better. Wiley spectral databases provide much more information than simply the spectrum. Database records include the following valuable details when available:

- Chemical structure
- Chemical name
- Exact mass
- Formula
- InChI/InChIKey
- Molecular weight
- SMILES
- Instrument name
- Technique



Compound coverage

Compounds currently include:

- Illicit adulterants of dietary supplements
- Oils and oil mixtures
- Pesticides



Compatibility

- Subscription includes KnowItAll ID Expert software for one-click basic spectral searches
- Optional: KnowItAll Analytical Edition (recommended for advanced analysis)
- Import spectra from most Raman instruments for direct comparison to reference spectra. For instrument compatibility, visit [sciencesolutions.wiley.com/compatibility](https://www.sciencesolutions.wiley.com/compatibility).



Trusted data from a trusted source

Wiley is the authoritative source for spectral data. Our renowned databases are processed according to rigorous protocols to ensure they are of the highest quality. Qualification procedures start at data acquisition and continue throughout the database development process. Any data acquired from trusted partners is thoroughly vetted before inclusion in our collections.