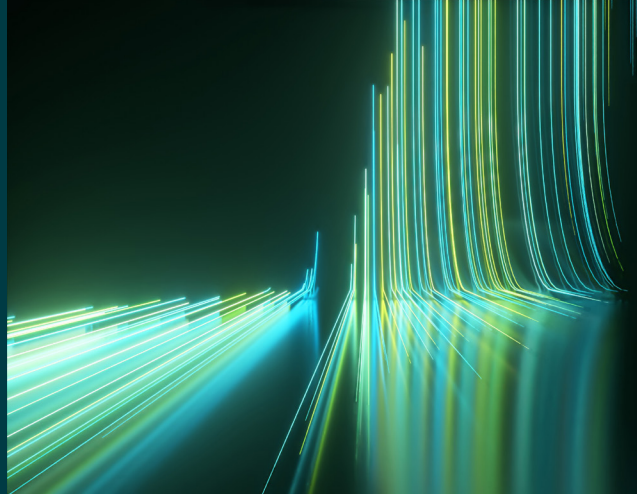


WILEY

Spectral Databases

From the leader in spectral data



LC-MS - Pharmaceutical Compounds Library - Wiley

Spectra – 39,647

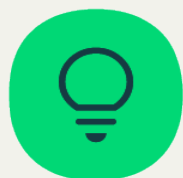
This database is only available as part of the KnowItAll LC-MS Library subscription.



Description

LC-MS offers critical advantages for pharmaceutical analysis: exceptional sensitivity and selectivity for detecting drug compounds and metabolites in biological matrices, structural confirmation through MS/MS fragmentation, compatibility with thermally labile or non-volatile drugs, multiplexing capability for simultaneous multi-drug analysis, wide dynamic range for quantification from trace to therapeutic levels, and minimal sample volume requirements. This combination makes LC-MS the industry standard for pharmaceutical analysis, from discovery through clinical development and post-market surveillance, meeting stringent regulatory requirements while enabling rapid, reliable compound identification and quantification.

This library enables rapid identification and quantification of drugs, metabolites, and impurities through matching of retention times, accurate mass, and fragmentation patterns.



Applications

- Drug discovery and formulation
- Drug discovery and development
- Forensics and toxicology
- Pharmacology
- Quality control and stability testing
- Biomedical research



Additional information

When it comes to spectral analysis, the more data you have the better. Wiley spectral databases provide much more information than simply the spectrum. Database records include the following valuable details when available:

- Chemical structure
- Chemical name
- Exact mass
- Formula
- InChI/InChIKey
- Molecular weight
- SMILES
- Ion polarity
- Precursor ion
- Precursor m/z
- Technique
- Convenient links to related references such as Human Metabolome Database (HMD), ZINC, KEGG, ChEMBL



Compound coverage

- Anti-infectives
- Alkaloids
- Peptides
- Small molecules
- Steroids
- Novel psychoactive substances (NPS)
- Stimulants
- Opioids
- Synthetic cannabinoids



Compatibility

For full compatibility information, please visit sciencesolutions.wiley.com/compatibility.



Trusted data from a trusted source

Wiley is the authoritative source for spectral data. Our renowned databases are processed according to rigorous protocols to ensure they are of the highest quality. Qualification procedures start at data acquisition and continue throughout the database development process. Any data acquired from trusted partners is thoroughly vetted before inclusion in our collections.