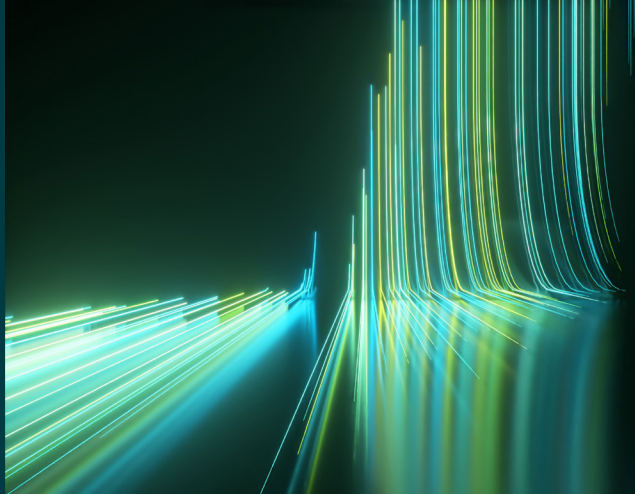


WILEY

Spectral Databases

From the leader in spectral data



LC-MS - Natural Products Library - Wiley

Spectra – 62,862

This database is only available as part of the KnowItAll LC-MS Library subscription.



Description

Natural products are important in pharmaceuticals, food, and agricultural industries. Their analysis accelerates drug discovery, using high-throughput screening for rapid identification.

The LC-MS - Natural Products Library contains over 62,800 spectra for natural products across a diverse chemical space, enabling fast identification bioactive molecules from plant, microbial, and marine sources. To ensure comprehensive compound coverage and confident identification, spectra are available in positive and negative ion modes and at different collision energies where possible.



Applications

- Drug discovery and dereplication
- Metabolomics
- Food safety and agricultural research
- Environmental chemistry



Additional information

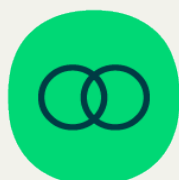
When it comes to spectral analysis, the more data you have the better. Wiley spectral databases provide much more information than simply the spectrum. Database records include the following valuable details when available:

- Chemical structure
- Chemical name
- Exact mass
- Formula
- InChI/InChIKey
- Molecular weight
- SMILES
- Ion polarity
- Precursor ion
- Precursor m/z
- Technique
- Collision energy
- Retention time
- Convenient links to related references such as Human Metabolome Database (HMD), ZINC, KEGG, ChEMBL



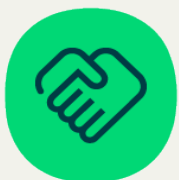
Compound coverage

- Alkaloids
- Amines and amino acids
- Phenolics
- Terpenoids
- Lipids
- Peptides



Compatibility

For full compatibility information, please visit sciencesolutions.wiley.com/compatibility.



Trusted data from a trusted source

Wiley is the authoritative source for spectral data. Our renowned databases are processed according to rigorous protocols to ensure they are of the highest quality. Qualification procedures start at data acquisition and continue throughout the database development process. Any data acquired from trusted partners is thoroughly vetted before inclusion in our collections.