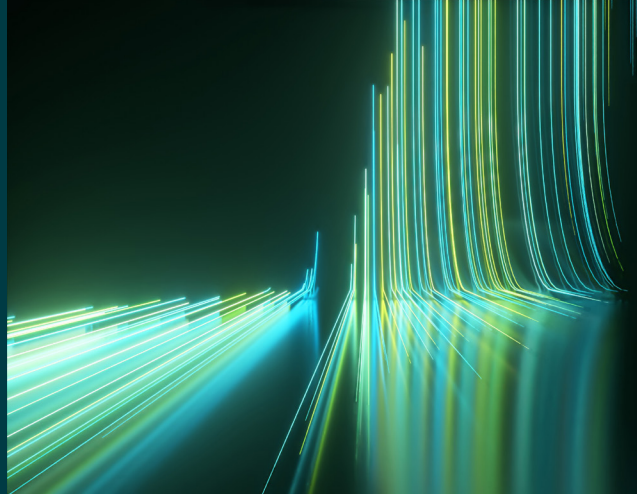


# WILEY

## Spectral Databases

From the leader in spectral data



### LC-MS - Lipids Library - Wiley

Spectra – 47,331

This database is only available as part of the KnowItAll LC-MS Library subscription.



#### Description

Lipids are a group of naturally occurring organic compounds that can vary greatly in their structural makeup, and thus the roles they play. Notably, lipids have the ability to serve as biomarkers for several diseases because of the critical role they play in organisms. The functionality of the lipid depends on its overall chemical structure. When taking into account the overall molecular variations of lipids such as to the backbone, degree of saturation, and stereochemistry, there are millions of potential structures of lipids.

Liquid chromatography-mass spectrometry (LC-MS) can be used as one method to analyze complex lipids. The *LC-MS - Lipids Library* contains spectra for over 47,000 lipid compounds across various classes such as N-acyl lipids, glycerophospholipids, fatty acid esters, sphingolipids and more, aiding lipidomics researchers in confident compound identification.



#### Applications

- Food safety and quality control
- Cosmetics
- Metabolomics
- Consumer goods
- Biomedical
- Pharmaceutical
- Clinical sciences
- Natural products



## Additional information

When it comes to spectral analysis, the more data you have the better. Wiley spectral databases provide much more information than simply the spectrum. Database records include the following valuable details when available:

- Chemical structure
- Chemical name
- Exact mass
- Formula
- InChI/InChIKey
- Molecular weight
- SMILES
- Ion polarity
- Precursor ion
- Precursor m/z
- Technique
- Retention time
- Convenient links to related references such as Human Metabolome Database (HMD), ZINC, KEGG, ChEMBL



## Compound coverage

- N-acyl lipids
- Glycerophospholipids
- Fatty acid esters
- Sphingolipids
- Acylcarnitines
- Bile acids



## Compatibility

For full compatibility information, please visit [sciencesolutions.wiley.com/compatibility](https://sciencesolutions.wiley.com/compatibility).



## Trusted data from a trusted source

Wiley is the authoritative source for spectral data. Our renowned databases are processed according to rigorous protocols to ensure they are of the highest quality. Qualification procedures start at data acquisition and continue throughout the database development process. Any data acquired from trusted partners is thoroughly vetted before inclusion in our collections.