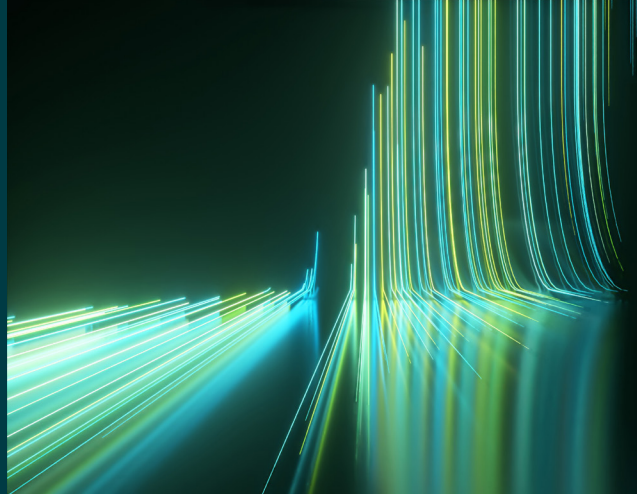


# WILEY

## Spectral Databases

From the leader in spectral data



### IR - Minerals - Wiley

Spectra – 363

This database is only available as part of the KnowItAll IR Spectral Library subscription.



#### Description

Mankind has always been fascinated by what minerals and elements other planets contain. With the first data from samples collected and analysed on Mars now returning to Earth, we can now see the minerals that the red planet Mars can offer us. The Analytical Database of Martian Minerals (ADaMM) provides the spectra for this database. Addition of this multi-analytical database to Wiley's databases will help in many ways including the original intended use of identification of Martian minerals on Mars, specifically those found at rover landing sites. The spectra reinforce coverage of the IR – Sadtler Minerals & Clays – Wiley database.



#### Applications

- Astrobiology
- Minerology
- Gemology
- Geology
- Space exploration



## Additional information

When it comes to spectral analysis, the more data you have the better. Wiley spectral databases provide much more information than simply the spectrum. Database records include the following valuable details when available:

- Chemical structure
- Chemical name
- Exact mass
- Formula
- InChI/InChIKey
- Molecular weight
- SMILES
- Instrument name
- Technique



## Compound coverage

Compounds contain the following elements:

- Amphiboles
- Carbonates
- Epidotes
- Feldspars
- Feldspatoids
- Garnets
- Olivines
- Oxides
- Phyllosilicates
- Pyroxenes
- Pyroxenoids
- Sulphates
- Zeolites



## Trusted data from a trusted source

Wiley is the authoritative source for spectral data. Our renowned databases are processed according to rigorous protocols to ensure they are of the highest quality. Qualification procedures start at data acquisition and continue throughout the database development process. Any data acquired from trusted partners is thoroughly vetted before inclusion in our collections.