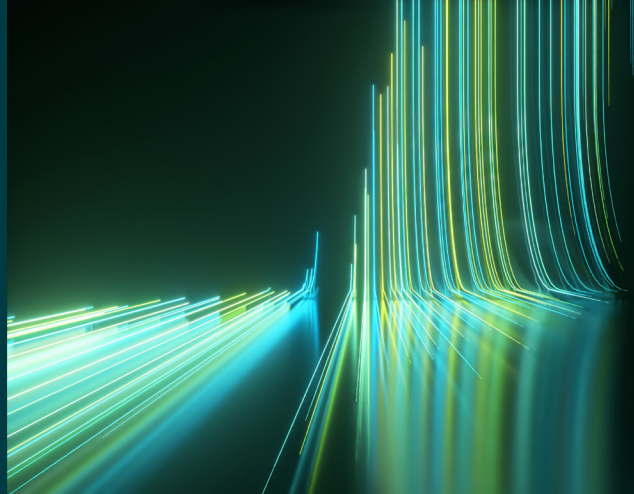


# WILEY

## Spectral Databases

From the leader in spectral data



### IR - Microbiology - Wiley

Spectra – 75

This database is only available as part of the KnowItAll IR Spectral Library subscription.



#### Description

Infrared spectroscopy is a rapid, non-destructive method for characterizing the biochemical profiles of microbiological samples. It is widely applied across food safety, pharmaceutical development, and applied microbiology research. This database contains IR spectra of Antarctic bacteria and pancreatic cell lines, supporting a diverse array of applications such as microorganism research, climate change studies, and clinical research.



#### Applications

- Microbiology research and method development
- Classification and comparison of microorganisms
- Environmental and climate change studies
- Clinical research
- Antibiotic resistance profiling
- Biosafety & contamination screening
- Chemotaxonomy
- Extremophile research



## Additional information

When it comes to spectral analysis, the more data you have the better. Wiley spectral databases provide much more information than simply the spectrum. Database records include the following valuable details when available:

- Compound name
- Classification
- Patient information (gender, age)
- Sample preparation procedure
- Source of sample
- Instrument name
- Origin



## Compound coverage

- Antarctic bacteria
- Pancreatic cell lines



## Compatibility

- Subscription includes KnowItAll ID Expert software for one-click basic spectral searches
- Optional: KnowItAll Analytical Edition (recommended for advanced analysis)
- Import spectra from most IR instruments for direct comparison to reference spectra. For instrument compatibility, visit [sciencesolutions.wiley.com/compatibility](https://sciencesolutions.wiley.com/compatibility).



## Trusted data from a trusted source

Wiley is the authoritative source for spectral data. Our renowned databases are processed according to rigorous protocols to ensure they are of the highest quality. Qualification procedures start at data acquisition and continue throughout the database development process. Any data acquired from trusted partners is thoroughly vetted before inclusion in our collections.