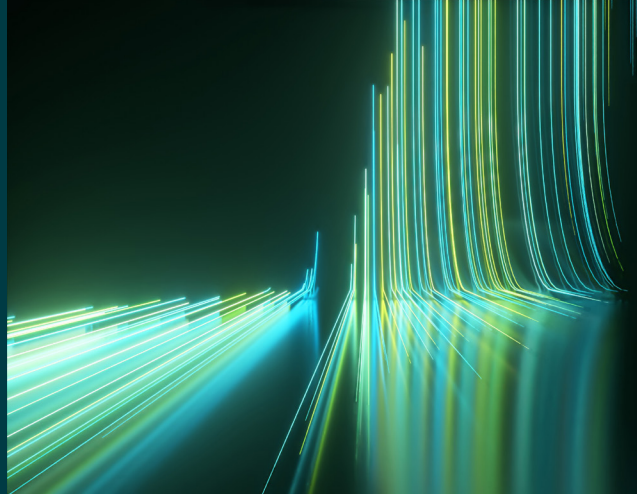


WILEY

Spectral Databases

From the leader in spectral data



LC-MS - General Compounds Library - Wiley

Spectra – 312,190

This database is only available as part of the KnowItAll LC-MS Library subscription.



Description

The LC-MS - General Compounds Library contains over 312,000 spectra for compounds across multiple application types such as natural products, metabolites, lipids, DNA adducts, and more. The database serves researchers in a variety of fields, including pharmaceuticals, clinical, environmental, natural products, and toxicology. To ensure comprehensive compound coverage and confident identification, spectra are available in positive and negative ion modes and at different collision energies where possible.



Applications

- Natural products discovery and dereplication
- Clinical and biomedical research
- Environmental and exposomics
- Lipoidomics
- Metabolomics



Additional information

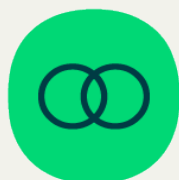
When it comes to spectral analysis, the more data you have the better. Wiley spectral databases provide much more information than simply the spectrum. Database records include the following valuable details when available:

- Chemical structure
- Chemical name
- Exact mass
- Formula
- InChI/InChIKey
- Molecular weight
- SMILES
- Ion polarity
- Precursor ion
- Precursor m/z
- Technique
- Collision energy
- Retention time
- Convenient links to related references such as Human Metabolome Database (HMD), ZINC, KEGG, ChEMBL



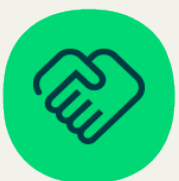
Compound coverage

- Natural products
- Alkaloids
- Terpenoids
- Flavonoids
- Phenolics
- Lipids
- Peptides
- DNA adducts
- Metabolites
- Nucleotides



Compatibility

For full compatibility information, please visit sciencesolutions.wiley.com/compatibility.



Trusted data from a trusted source

Wiley is the authoritative source for spectral data. Our renowned databases are processed according to rigorous protocols to ensure they are of the highest quality. Qualification procedures start at data acquisition and continue throughout the database development process. Any data acquired from trusted partners is thoroughly vetted before inclusion in our collections.