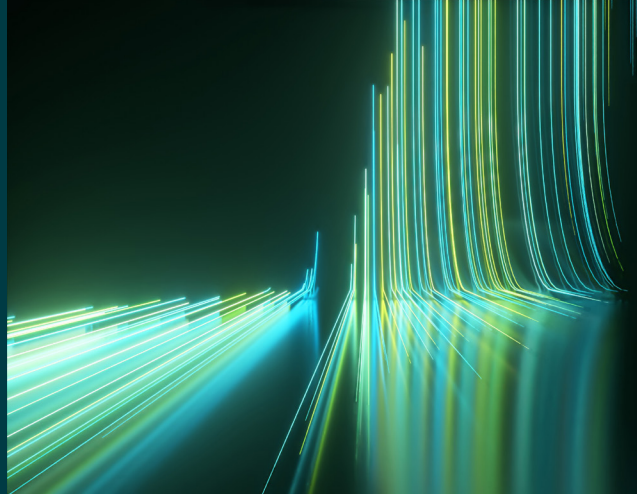


WILEY

Spectral Databases

From the leader in spectral data



LC-MS - Food Related Compounds Library - Wiley

Spectra – 11,333

This database is only available as part of the KnowItAll LC-MS Library subscription.



Description

Food safety and quality are important factors in enabling public health protection. The ability to identify possible contaminants is critical.

The LC-MS – Food Related Compounds Library contains over 11,000 spectra of food related compounds such as contaminants, polyphenols, fatty acids, aroma compounds, and endogenous human metabolites. To ensure comprehensive compound coverage and confident identification, spectra are available in positive and negative ion modes and at different collision energies where possible.

The database supports critical applications across the food supply chain including food safety screening, authenticity verification, nutritional profiling, contaminant detection, quality control, and regulatory compliance testing.



Applications

- Food safety
- Contaminant and suspect screening
- Non-targeted analysis
- Quality assurance and quality control
- Metabolomics
- Regulatory compliance testing



Additional information

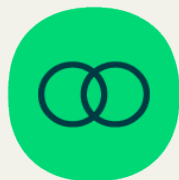
When it comes to spectral analysis, the more data you have the better. Wiley spectral databases provide much more information than simply the spectrum. Database records include the following valuable details when available:

- Chemical structure
- Chemical name
- Exact mass
- Formula
- InChI/InChIKey
- Molecular weight
- SMILES
- Ion polarity
- Precursor ion
- Precursor m/z
- Technique
- Collision energy
- Convenient links to related references such as Human Metabolome Database (HMD), ZINC, KEGG, ChEMBL



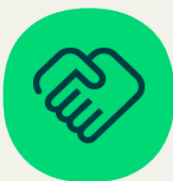
Compound coverage

- Food contaminants
- Wine-specific compounds
- Polyphenols
- Organic acids
- Fatty acids
- Carnitines
- Indoles
- Aroma compounds
- Endogenous human metabolites



Compatibility

For full compatibility information, please visit sciencesolutions.wiley.com/compatibility.



Trusted data from a trusted source

Wiley is the authoritative source for spectral data. Our renowned databases are processed according to rigorous protocols to ensure they are of the highest quality. Qualification procedures start at data acquisition and continue throughout the database development process. Any data acquired from trusted partners is thoroughly vetted before inclusion in our collections.