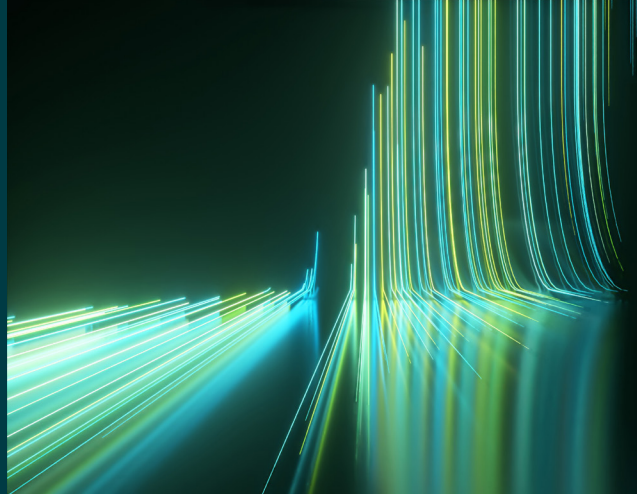


# WILEY

## Spectral Databases

From the leader in spectral data



### LC-MS - Environmental Compounds Library - Wiley

Spectra – 7,988

This database is only available as part of the KnowItAll LC-MS Library subscription.



#### Description

Environmental compound analysis is essential in agricultural studies and regulatory frameworks. Monitoring the presence of chemicals such as pesticides and fungicides in drinking water, soil, and food protects consumer health and the environment. Since these compounds can pose possible health risks, many safety programs depend on being able to identify them during their analyses.

The LC-MS – Environmental Compounds Library contains over 7,500 LC-MS spectra of pesticides and fungicides, and their metabolites. To ensure comprehensive compound coverage and confident identification, spectra are available in positive and negative ion modes and at different collision energies where possible.



#### Applications

- Environmental analysis
- Agricultural research
- Food safety
- Quality assurance and quality control
- Metabolomics
- Contaminant and suspect screening
- Non-targeted analysis
- Regulatory compliance testing



## Additional information

When it comes to spectral analysis, the more data you have the better. Wiley spectral databases provide much more information than simply the spectrum. Database records include the following valuable details when available:

- Chemical structure
- Chemical name
- Formula
- InChI/InChIKey
- Molecular weight
- SMILES
- Ion polarity
- Precursor ion
- Precursor m/z
- Technique
- Collision energy
- Retention time
- Convenient links to related references such as Human Metabolome Database (HMD), ZINC, KEGG, ChEMBL



## Compound coverage

- Fungicides
- Pesticides



## Compatibility

For full compatibility information, please visit [sciencesolutions.wiley.com/compatibility](https://sciencesolutions.wiley.com/compatibility).



## Trusted data from a trusted source

Wiley is the authoritative source for spectral data. Our renowned databases are processed according to rigorous protocols to ensure they are of the highest quality. Qualification procedures start at data acquisition and continue throughout the database development process. Any data acquired from trusted partners is thoroughly vetted before inclusion in our collections.