

WILEY

Wiley Registry of Mass Spectral Data 2023

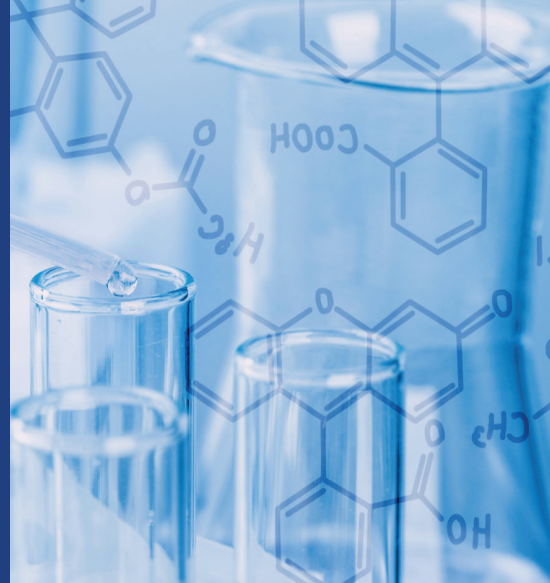
From the Leader in Spectral Data

The essential GC-MS library for confident spectral analysis

The **field-tested and proven** *Wiley Registry of Mass Spectral Data* continues to empower laboratories worldwide. The 2023 release of this vital MS database provides access to over **873,000 spectra** with expanded coverage to expedite your workflow even further.

Designed for use across multiple applications, from untargeted GC-MS screening to accurate mass workflows with MS-TOF instruments, this collection ensures confidence in your spectral search results, even in the most demanding applications.

- **Broad range of compounds** for targeted and non-targeted analyses—increase both the speed and likelihood of identification with a comprehensive dataset.
- **Spectral records contain additional information** that's searchable such as physical properties, structures, and DOIs when available to help narrow your results even further.
- **Data is carefully curated and reviewed** by Wiley's internal and external experts to ensure it meets quality standards for results you can rely on.
- **Spectra are segmented into separate libraries** including excess replicate spectra to enable robust searching across varied laboratory settings.
- **Take the guesswork out of instrument compatibility.** Wiley Registry is available in the most common manufacturer formats.



Increase the speed and likelihood of MS identification with expanded coverage in the latest release of this trusted resource.

And with our new subscription option you get access to **even more spectral data** as it's added to the collection between releases!

A foundational tool for any laboratory engaged in GC-MS analysis, this spectral library remains a **lab standard**, consistently evolving to meet the ever-growing research demands of today in our continued commitment to deliver relevant, quality data.

Available in the most common instrumentation manufacturer formats, this spectral library is a necessity for any laboratory engaged in GC-MS analysis.



LIBRARY SPECIFICATIONS

The Wiley Registry is now also available as a KnowItAll subscription for continued access to new data between major releases!

Data Type	# Spectra	
	Wiley Registry 2023	Wiley Registry Subscription
GC-MS Spectra	873,300	895,700
Searchable Structures	841,100	863,500
Unique Compounds	741,000	759,100
Estimated Retention Indices	738,400	757,183



WHAT'S NEW IN THIS RELEASE

Be sure your lab is up to date with the latest release of this evolving collection. Take advantage of all the benefits in the 2023 release:

- **Addition of over 50,000 unique compounds** with over 56,000 spectra.
- **Expanded coverage of world patents and peer reviewed literature**, including DOIs of source articles. Data is also sourced from partner labs.
- **All spectra have been assigned a quality index**, enabling searches to be tuned to exclude spectra below a quality index threshold.



APPLICATIONS

This collection offers exceptional reliability as a comprehensive resource for the analysis, identification, classification, and verification of compounds by mass spectrometry in a wide range of applications such as **environmental, forensics/toxicology, metabolomics, pharmaceutical, biotech, food/cosmetics, defense/homeland security**, and many more.

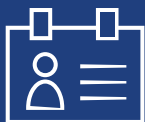


ADDITIONAL INFORMATION

When it comes to spectral analysis, the more data you have the better. Wiley spectral databases provide much more information than simply the spectrum to give you a fuller picture of your results. Database records may include valuable details when available for a record such as:

- Chemical Structure
- Chemical Name
- Exact Mass
- Calculated Kovats RI values
- Splash IDs
- Wiley ID
- Formula
- InChI/InChIKey
- Molecular Weight
- Quality Index (QI)
- Digital Object Identifier (DOI)

And because it's searchable, you can use this information to narrow your results even further.



ABOUT THE AUTHORS

Originating through a collaboration by Drs. Einar August Stenhagen, Fred McLafferty, and Sixten Abrahamsson, the Wiley Registry pioneered the use of spectral data in mass spectrometry.

- Sixten Abrahamsson, a member of the Royal Swedish Academy of Sciences, was an x-ray crystallographer whose group studied structure and function of biologically active molecules.
- Fred McLafferty, a member of the National Academy of Sciences, was a leading light in mass spectrometry, known for top-down analysis and the McLafferty rearrangement.
- Einar Stenhagen, a member of the Royal Swedish Academy of Sciences, invented, with his wife, Stina Ställberg-Stenhagen, the jet separator, enabling the combination of gas and liquid chromatography with mass spectrometry.

Since 2009, the Wiley Registry has been maintained and updated by the Wiley Science Solutions data team.



STAY ON TOP OF THE LATEST DATA WITH A SUBSCRIPTION

The Wiley Registry is also now available as a KnowItAll subscription. Get early access to new data for continual impact on your laboratory workflow.

- **No need to wait until the next release for new Wiley Registry data!** Get access to spectral data as it's added to the Wiley Registry between releases.
- **By adding a subscription to the KnowItAll software, you will also have access to one of the most powerful tools** for automated non-targeted GC-MS analysis (deconvolution + library search), MS Adaptive Search for novel compounds, and more.



ACCELERATE YOUR WORKFLOW EVEN FURTHER

- **More data with the Wiley Registry/NIST 2023 combined library.** Comprehensive coverage with over 3 million spectra (includes EI and MS-MS data)
- **Want to access even more data—plus powerful analysis tools—with KnowItAll - Wiley MS Identification Pro + NIST bundles.**

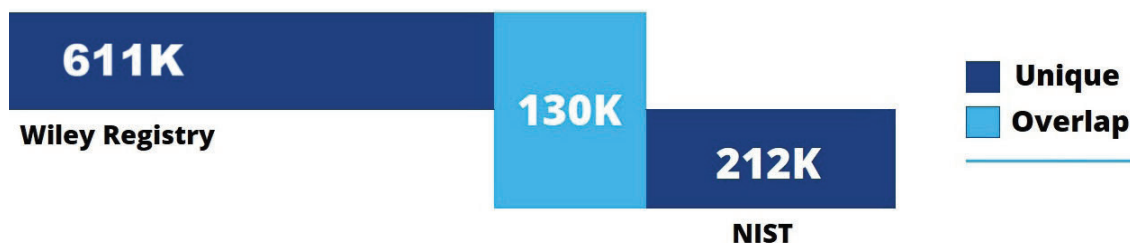
Product Version & Comparison Chart

Data Type	WR23 (2023)	WR Subscription	WR12 (2020)	WR11 (2017)	NIST23* (EI Spectra)	NIST20* (EI Spectra)	NIST17* (EI Spectra)	WR23/NIST23* (EI Spectra)
Mass Spectra	873,300	895,700	817,200	775,800	394,000	350,000	306,600	1,180,00
Searchable Structures	841,100	863,500	785,000	741,200	347,100	350,000	306,600	1,148,600
Unique Compounds	741,000	759,100	668,400	632,500	341,600	306,000	262,100	950,200

* Note: Table above does not include MS-MS data counts from NIST and WR/NIST libraries.
Wiley Registry/NIST EI database counts = Wiley Registry and NIST, minus any overlap.

WR = Wiley Registry

Unique EI Spectra Comparison - Wiley Registry vs NIST





COMPATIBILITY

Compatible with most current and legacy mass spectrometry data systems. For full compatibility information, please visit sciencesolutions.wiley.com/compatibility



ORDERING INFORMATION

- **Wiley Registry of Mass Spectral Data 2023**
USB: 9781119736325
DOWNLOAD: 978EALDB05697
- **Wiley Registry of Mass Spectral Data 2023 (Upgrade)**
USB: 9781394198740
DOWNLOAD: 978EALDB05703

With a KnowItAll subscription, you get access to new Wiley Registry data as it's added in between releases.

- **Wiley Registry of Mass Spectral Data (Annual Subscription)**
978EALDB05482
- **Wiley Registry of Mass Spectral Data (Annual Subscription Renewal)**
978EALDB05499

Be sure to ask about KnowItAll MS Identification Pro + NIST bundles for access to even more spectra and tools.



TRUSTED DATA FROM A TRUSTED SOURCE

Wiley is the authoritative source for spectral data. Our renowned databases are processed according to rigorous protocols to ensure they are of the highest quality. Qualification procedures start at data acquisition and continue throughout the database development process. Any data acquired from trusted partners is thoroughly vetted before inclusion in our collections.

<https://sciencesolutions.wiley.com/>

Quality Data. Results You Can Rely On.