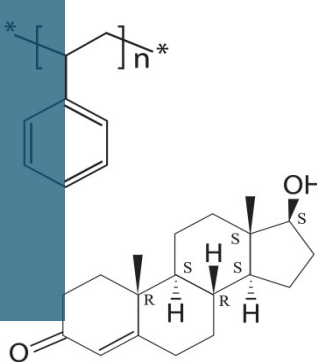


KnowItAll Software - Supported File Formats

Multiple file and instrument formats



Wiley Spectral Databases

Wiley's KnowItAll Software helps scientists analyze and manage multiple types of spectral/chemical data in multiple file and instrument formats. Formats supported depend on the edition of KnowItAll licensed. KnowItAll can also import XY data and spreadsheets: Generic X Y data files (*.*) ; text files delimited by comma, tab, etc. (*.csv).

IR

Sadtler IRF (*.irf)
Bomem (*.a01)
Bruker (*.*)
Digilab (*.dt)
Galactic/GRAMS (*.spc, *.fir, *.ir, *.rmn)
HORIBA NGS/TSF (*.ngs, *.tsf)

Generic XY Data (*.*)
HORIBA MDW (*.mdw)
JASCO (*.jws, *.j1d)
JCAMP (*.dx, *.jdx)
JEOL (*.wsf) Mattson (*.ras, *.abs)

Nicolet (*.spa)
PE Spectrum (*.sp)
Shimadzu SMF (*.irs, *.smf)
Spectacle/Shimadzu (*.irs, *.nmr, *.uvd)
RenishawWIRE Files (*.wdf, *.wxd)

Raman

Sadtler IRF (*.irf)
Bomem (*.a01)
Bruker (*.*)
BWTek (*.txtr)
Digilab (*.dt)
Galactic/Grams (*.spc, *.fir, *.ir, *.rmn)
Generic XY Data (*.*)

HORIBA MDW (*.mdw)
HORIBA LabSpec (*.l6s, *.ngs, *.tsf)
JASCO (*.jws, *.j1d)
JCAMP (*.dx, *.jdx)
JEOL (*.wsf)
Mattson (*.ras, *.abs)

Nicolet (*.spa)
PE Spectrum (*.sp)
RapID (*.JCM)
Renishaw WIRE Files (*.wxd, *.wdf)
Shimadzu SMF (*.irs, *.smf)
Spectacle/Shimadzu (*.irs, *.nmr, *.uvd)

NIR

Sadtler IRF (*.irf)
Bomem (*.a01)
Bruker (*.*)
Digilab (*.dt)
Galactic/GRAMS (*.spc, *.fir, *.ir, *.rmn)
Generic XY Data (*.*)

GuidedWave (*.*)
HORIBA LabSpec (*.l6s, *.ngs, *.tsf) HORIBA
MDW (*.mdw)
JASCO (*.jws, *.j1d)
JCAMP (*.dx, *.jdx)

Mattson (*.ras, *.abs)
Nicolet (*.spa)
PE Spectrum (*.sp)
Spectacle/Shimadzu (*.irs, *.nmr, *.uvd)
Shimadzu SMF (*.irs, *.smf)

NMR

Bruker Aspect (*.*)
Bruker UXNMR/XWinNMR 1D (*.1r, *.fid)
Bruker WinNMR (*.1r, *.fid)
Galactic/GRAMS (*.spc, *.fir, *.ir, *.rmn)
Generic XY Data (*.*)

JEOL AL NMR (*.als)
JEOL Delta NMR (*.jdf)
JEOL GX/GSX/EX-90 NMR (*.gxd, *.gxp)
JCAMP (*.dx, *.jdx)

MestRe-C (*.mrc)
NUTS (*.*)
Spectacle/Shimadzu (*.irs, *.nmr, *.uvd)
Varian 1D NMR (phasefile, data, fid)

MS

Agilent / HP ChemStation (*.d; data.ms)
Agilent / HP ChemStation (NT) (*.msd, *.ms)
ANDI Mass Spec (*.cdf)
Anelva AGS-7000 (*.par)
Anelva AGS-7000 (DOS)(*.par)
Automass (*.spa)
Balzers QuadStar (*.scb)
EPA (*.ep)
Extrel Merlin (*.ms)
Finnigan GCQ (*.ms)
Finnigan Incos (*.mi)
Finnigan Ion Trap (*.dat)
Finnigan ITS-40 (*.ms)
Finnigan Magnum (*.ms)
Finnigan SSX (*.dat)
Galactic/Grams (*.spc, *.fir, *.ir)
Generic XY data (*.*)
Hitachi (*.mch)
Hitachi M-4100 (ms1.mat)
Hitachi MS Filer (*.msf)
HP RTE Chemstation (*.ms)

JEOL Compliment (*.hed)
JEOL DA-5000 (*.dat)
JEOL DA-6000(*.dat)
JEOL GCMate (*.lrp)
JEOL JCAMP (*.jsp)
JEOL Mario (*.hed)
JCAMP (*.dx, *.jdx)
Kratos DS90 (*.rn)
Kratos Mach3 (*.run)
MASPEC (*.mss)
Mass Evolution (*.spe)
Mass Evolution EZScan v4 (*.hrd)
MassLib JCAMP (*.mlj)
MatLab (*.mlt)
MSS (*.mss)
MS ChemStation (*.ms)
Nermag SIDAR (*.spe)
Netzsch (*.ntz)
netCDF (*.cdf)
Palisade PAL (*.pal)

PE TurboMass (*.raw;_func, *.dat)
PE QMass-910 (*.mss)
Shrader Systems/Windows (*.lrp)
Shrader System (*.lrp)
Shimadzu PAC200 (*.x)
Shimadzu QP-5000 (*.r)
Teknivent Vector/2 (*.tkf)
Teknivent Vector/1 (*.raw)
Teknivent Vector/2 (*.v2s)
Text (*.txt)
ThermoQuest Xcalibur (*.raw)
Varian Saturn (*.ms)
VG 11-250 (*.dat)
VG JCAMP (*.jdx)
VG LabBase (*.hdr)
VG MassLab (*.raw;_func, *.dat)
VG MassLynx (*.raw;_func, *.dat)
VG MassLynx Processed (*.raw;_func, *.dat)
VG ThermoLab (*.lgh)
VG ThermoLab (*.ps)

UV-Vis

Galactic/Grams (*.spc, *.fir, *.ir)
Generic XY Data (*.*)

JCAMP (*.dx, *.jdx)
JASCO (*.jws)

PG Instruments (*.spd)
Spectacle/Shimadzu (*.irs, *.nmr, *.uvd)

GC

ANDI Chromatography (*.cdf)
Galactic/Grams (*.spc, *.fir, *.ir)

Generic XY Data (*.*)
MS ChemStation (*.ms)

Spectacle/Shimadzu (*.irs, *.nmr, *.uvd)

Structure File Formats

ChemDraw (*.cdx)
ChemWindow (*.cwg)
ChemWindow (*.cwt)
CML (*.XML)

DrawIt (*.dsf)
DrawIt & style (*.dst)
Hampden (*.hsf)
InChI (*.txt)

JCAMP (*.dx, *.jdx)
MDL MOL (*.mol)
MDL RXN (*.rxn)
Smiles (*.smi)
XYZ (*.xyz)

Data File Formats

MDL SDF (*.sdf)
Infometrix (*.dat)

REV-06242020

sciencesolutions.wiley.com/

WILEY